

# INTERNATIONAL STANDARD

## NORME INTERNATIONALE

---

**Railway applications – Rolling stock – Combined test method for traction systems**

**Applications ferroviaires – Matériel roulant – Méthode d'essais combinés pour systèmes de traction**





## THIS PUBLICATION IS COPYRIGHT PROTECTED

Copyright © 2016 IEC, Geneva, Switzerland

All rights reserved. Unless otherwise specified, no part of this publication may be reproduced or utilized in any form or by any means, electronic or mechanical, including photocopying and microfilm, without permission in writing from either IEC or IEC's member National Committee in the country of the requester. If you have any questions about IEC copyright or have an enquiry about obtaining additional rights to this publication, please contact the address below or your local IEC member National Committee for further information.

Droits de reproduction réservés. Sauf indication contraire, aucune partie de cette publication ne peut être reproduite ni utilisée sous quelque forme que ce soit et par aucun procédé, électronique ou mécanique, y compris la photocopie et les microfilms, sans l'accord écrit de l'IEC ou du Comité national de l'IEC du pays du demandeur. Si vous avez des questions sur le copyright de l'IEC ou si vous désirez obtenir des droits supplémentaires sur cette publication, utilisez les coordonnées ci-après ou contactez le Comité national de l'IEC de votre pays de résidence.

IEC Central Office  
3, rue de Varembe  
CH-1211 Geneva 20  
Switzerland

Tel.: +41 22 919 02 11  
Fax: +41 22 919 03 00  
[info@iec.ch](mailto:info@iec.ch)  
[www.iec.ch](http://www.iec.ch)

### About the IEC

The International Electrotechnical Commission (IEC) is the leading global organization that prepares and publishes International Standards for all electrical, electronic and related technologies.

### About IEC publications

The technical content of IEC publications is kept under constant review by the IEC. Please make sure that you have the latest edition, a corrigenda or an amendment might have been published.

#### IEC Catalogue - [webstore.iec.ch/catalogue](http://webstore.iec.ch/catalogue)

The stand-alone application for consulting the entire bibliographical information on IEC International Standards, Technical Specifications, Technical Reports and other documents. Available for PC, Mac OS, Android Tablets and iPad.

#### IEC publications search - [www.iec.ch/searchpub](http://www.iec.ch/searchpub)

The advanced search enables to find IEC publications by a variety of criteria (reference number, text, technical committee,...). It also gives information on projects, replaced and withdrawn publications.

#### IEC Just Published - [webstore.iec.ch/justpublished](http://webstore.iec.ch/justpublished)

Stay up to date on all new IEC publications. Just Published details all new publications released. Available online and also once a month by email.

#### Electropedia - [www.electropedia.org](http://www.electropedia.org)

The world's leading online dictionary of electronic and electrical terms containing 20 000 terms and definitions in English and French, with equivalent terms in 15 additional languages. Also known as the International Electrotechnical Vocabulary (IEV) online.

#### IEC Glossary - [std.iec.ch/glossary](http://std.iec.ch/glossary)

65 000 electrotechnical terminology entries in English and French extracted from the Terms and Definitions clause of IEC publications issued since 2002. Some entries have been collected from earlier publications of IEC TC 37, 77, 86 and CISPR.

#### IEC Customer Service Centre - [webstore.iec.ch/csc](http://webstore.iec.ch/csc)

If you wish to give us your feedback on this publication or need further assistance, please contact the Customer Service Centre: [csc@iec.ch](mailto:csc@iec.ch).

---

### A propos de l'IEC

La Commission Electrotechnique Internationale (IEC) est la première organisation mondiale qui élabore et publie des Normes internationales pour tout ce qui a trait à l'électricité, à l'électronique et aux technologies apparentées.

### A propos des publications IEC

Le contenu technique des publications IEC est constamment revu. Veuillez vous assurer que vous possédez l'édition la plus récente, un corrigendum ou amendement peut avoir été publié.

#### Catalogue IEC - [webstore.iec.ch/catalogue](http://webstore.iec.ch/catalogue)

Application autonome pour consulter tous les renseignements bibliographiques sur les Normes internationales, Spécifications techniques, Rapports techniques et autres documents de l'IEC. Disponible pour PC, Mac OS, tablettes Android et iPad.

#### Recherche de publications IEC - [www.iec.ch/searchpub](http://www.iec.ch/searchpub)

La recherche avancée permet de trouver des publications IEC en utilisant différents critères (numéro de référence, texte, comité d'études,...). Elle donne aussi des informations sur les projets et les publications remplacées ou retirées.

#### IEC Just Published - [webstore.iec.ch/justpublished](http://webstore.iec.ch/justpublished)

Restez informé sur les nouvelles publications IEC. Just Published détaille les nouvelles publications parues. Disponible en ligne et aussi une fois par mois par email.

#### Electropedia - [www.electropedia.org](http://www.electropedia.org)

Le premier dictionnaire en ligne de termes électroniques et électriques. Il contient 20 000 termes et définitions en anglais et en français, ainsi que les termes équivalents dans 15 langues additionnelles. Egalement appelé Vocabulaire Electrotechnique International (IEV) en ligne.

#### Glossaire IEC - [std.iec.ch/glossary](http://std.iec.ch/glossary)

65 000 entrées terminologiques électrotechniques, en anglais et en français, extraites des articles Termes et Définitions des publications IEC parues depuis 2002. Plus certaines entrées antérieures extraites des publications des CE 37, 77, 86 et CISPR de l'IEC.

#### Service Clients - [webstore.iec.ch/csc](http://webstore.iec.ch/csc)

Si vous désirez nous donner des commentaires sur cette publication ou si vous avez des questions contactez-nous: [csc@iec.ch](mailto:csc@iec.ch).



IEC 61377

Edition 2.0 2016-01

# INTERNATIONAL STANDARD

# NORME INTERNATIONALE

---

**Railway applications – Rolling stock – Combined test method for traction systems**

**Applications ferroviaires – Matériel roulant – Méthode d'essais combinés pour systèmes de traction**

INTERNATIONAL  
ELECTROTECHNICAL  
COMMISSION

COMMISSION  
ELECTROTECHNIQUE  
INTERNATIONALE

---

ICS 45.060

ISBN 978-2-8322-3101-2

**Warning! Make sure that you obtained this publication from an authorized distributor.  
Attention! Veuillez vous assurer que vous avez obtenu cette publication via un distributeur agréé.**

## CONTENTS

FOREWORD.....	6
1 Scope.....	8
2 Normative references .....	10
3 Terms and definitions .....	10
4 Traction system characteristics.....	12
5 General test requirements .....	13
6 General test conditions.....	14
6.1 Test setup.....	14
6.1.1 Setup of traction system under test.....	14
6.1.2 Test bench architecture .....	15
6.2 Cooling during the test.....	17
6.3 Mechanical output measurement.....	18
6.3.1 General .....	18
6.3.2 Summation of losses method.....	18
6.3.3 Comparison of power method .....	19
6.3.4 Comparison of current method.....	20
6.3.5 Back to back method .....	21
6.4 Tolerances and measuring accuracy .....	21
6.5 Environmental conditions .....	21
7 Torque characteristic test .....	22
7.1 General.....	22
7.2 Torque characteristics test at motor hot .....	22
7.2.1 Test objective .....	22
7.2.2 Test conditions .....	22
7.2.3 Test procedure .....	23
7.2.4 Acceptance criteria .....	23
7.3 Torque characteristics test at motor cold.....	23
7.3.1 Test objective .....	23
7.3.2 Test conditions .....	23
7.3.3 Test procedure .....	24
7.3.4 Acceptance criteria.....	24
7.4 Starting torque at zero speed.....	24
7.4.1 Test objective .....	24
7.4.2 Test conditions .....	24
7.4.3 Test procedure .....	24
7.4.4 Acceptance criteria .....	24
8 Efficiency and energy consumption test.....	24
8.1 General.....	24
8.2 Efficiency characteristics .....	25
8.2.1 Test objective .....	25
8.2.2 Test conditions .....	25
8.2.3 Test procedure .....	25
8.2.4 Acceptance criteria .....	25
8.3 Energy consumption on route profile.....	26
8.3.1 Test objective .....	26

8.3.2	Test conditions .....	26
8.3.3	Test procedure .....	26
8.3.4	Acceptance criteria .....	26
9	Temperature rise test .....	27
9.1	General.....	27
9.2	Temperature rise test at constant load .....	27
9.2.1	Test objective .....	27
9.2.2	Test conditions .....	27
9.2.3	Test procedure .....	27
9.2.4	Acceptance criteria .....	28
9.3	Temperature rise on route profile .....	28
9.3.1	Test objective .....	28
9.3.2	Test conditions .....	28
9.3.3	Test procedure .....	28
9.3.4	Acceptance criteria .....	28
9.4	Test with wheel diameter differences for paralleled asynchronous motors .....	29
9.4.1	General .....	29
9.4.2	Test objective .....	29
9.4.3	Test conditions .....	29
9.4.4	Test procedure .....	30
10	System function test .....	31
10.1	Start from backward/reverse motion.....	31
10.1.1	Test objective .....	31
10.1.2	Test conditions .....	31
10.1.3	Test procedure .....	31
10.1.4	Acceptance criteria .....	31
10.2	Motoring-braking transition.....	31
10.2.1	Test objective .....	31
10.2.2	Test conditions .....	31
10.2.3	Test procedure .....	32
10.2.4	Acceptance criteria .....	32
11	Variation of line voltage .....	32
11.1	Test objective .....	32
11.2	Test conditions .....	32
11.3	Test procedure.....	33
11.4	Acceptance criteria .....	34
12	System protection test .....	34
12.1	General.....	34
12.2	Rapid voltage changes test.....	34
12.2.1	Test objective .....	34
12.2.2	Test conditions .....	34
12.2.3	Test procedure .....	35
12.2.4	Acceptance criteria .....	36
12.3	Traction supply voltage interruption .....	36
12.3.1	Test objective .....	36
12.3.2	Test conditions .....	36
12.3.3	Test procedure .....	36
12.3.4	Acceptance criteria .....	36

12.4	Traction supply contact loss .....	36
12.4.1	Test objective .....	36
12.4.2	Test conditions .....	36
12.4.3	Test procedure .....	37
12.4.4	Acceptance criteria .....	37
12.5	Sudden loss of regeneration capability .....	37
12.5.1	Test objective .....	37
12.5.2	Test conditions .....	37
12.5.3	Test procedure .....	38
12.5.4	Acceptance criteria .....	38
12.6	Traction inverter stop .....	38
12.6.1	Test objective .....	38
12.6.2	Test conditions .....	38
12.6.3	Test procedure .....	38
12.6.4	Acceptance criteria .....	38
12.7	Temperature calculation functions.....	39
12.7.1	General .....	39
12.7.2	Test objective .....	39
12.7.3	Test conditions .....	39
12.7.4	Test procedure .....	39
12.7.5	Acceptance criteria .....	39
12.8	Over-current and over-voltage protection .....	39
12.9	Control battery supply interruption .....	39
12.9.1	Test objective .....	39
12.9.2	Test conditions .....	39
12.9.3	Test procedure .....	39
12.9.4	Acceptance criteria .....	40
13	Fault management test .....	40
13.1	General.....	40
13.2	Loss of sensor function .....	40
13.3	Loss of command and feedback signals .....	40
13.4	Fault in cooling systems.....	40
13.5	Earth and short-circuit faults .....	41
Annex A (normative)	List of combined tests .....	42
Annex B (informative)	List of clauses with agreements between the user and manufacturer .....	43
Annex C (normative)	Special test items and conditions for DC motors .....	44
C.1	General.....	44
C.2	Test bench architecture .....	44
C.2.1	Test setup .....	44
C.2.2	Load system .....	44
C.3	Commutation test.....	45
Bibliography	.....	46
Figure 1	– Overview of traction system architecture .....	8
Figure 2	– Example of relationship between the “traction system under test” and the “traction system” .....	9
Figure 3	– Traction system – relationship between user, suppliers and manufacturer.....	11

Figure 4 – Example of peak temperatures on route profile .....	13
Figure 5 – Example of test bench architecture with speed controlled load system .....	15
Figure 6 – Example of test bench architecture with back to back method .....	16
Figure 7 – Examples of simulating auxiliary load and traction load power supply .....	17
Figure 8 – Example of measurement using summation of losses method .....	18
Figure 9 – Example of measurement using comparison of power method.....	20
Figure 10 – Example of measurement using comparison of current method .....	21
Figure 11 – Example of measurement using back to back method.....	21
Figure 12 – Torque characteristics of a traction system .....	23
Figure 13 – Effect of wheel diameter mismatch on the torque characteristic of asynchronous motor .....	29
Figure 14 – Test conditions for motoring-braking transition .....	32
Figure 15 – Test conditions in traction system range of voltage .....	33
Figure 16 – Test conditions for variation of the voltage .....	33
Figure 17 – Rapid voltage change with DC line voltage.....	35
Figure 18 – Rapid voltage change with AC line voltage.....	35
Figure 19 – Example of method to create a rapid voltage change .....	36
Figure 20 – Example of method to simulate the traction supply contact loss.....	37
Figure 21 – Example of method to create loss of regenerative capability.....	38
Figure C.1 – Example of braking configuration for a traction system under test with separately excited DC motor .....	44
Figure C.2 – Test bench arrangement for back to back test of the traction system under test with a DC motor .....	45
Table A.1 – List of combined tests .....	42
Table B.1 – List of subclauses including agreements between the user and manufacturer .....	43

# INTERNATIONAL ELECTROTECHNICAL COMMISSION

---

## **RAILWAY APPLICATIONS – ROLLING STOCK – COMBINED TEST METHOD FOR TRACTION SYSTEMS**

### FOREWORD

- 1) The International Electrotechnical Commission (IEC) is a worldwide organization for standardization comprising all national electrotechnical committees (IEC National Committees). The object of IEC is to promote international co-operation on all questions concerning standardization in the electrical and electronic fields. To this end and in addition to other activities, IEC publishes International Standards, Technical Specifications, Technical Reports, Publicly Available Specifications (PAS) and Guides (hereafter referred to as "IEC Publication(s)"). Their preparation is entrusted to technical committees; any IEC National Committee interested in the subject dealt with may participate in this preparatory work. International, governmental and non-governmental organizations liaising with the IEC also participate in this preparation. IEC collaborates closely with the International Organization for Standardization (ISO) in accordance with conditions determined by agreement between the two organizations.
- 2) The formal decisions or agreements of IEC on technical matters express, as nearly as possible, an international consensus of opinion on the relevant subjects since each technical committee has representation from all interested IEC National Committees.
- 3) IEC Publications have the form of recommendations for international use and are accepted by IEC National Committees in that sense. While all reasonable efforts are made to ensure that the technical content of IEC Publications is accurate, IEC cannot be held responsible for the way in which they are used or for any misinterpretation by any end user.
- 4) In order to promote international uniformity, IEC National Committees undertake to apply IEC Publications transparently to the maximum extent possible in their national and regional publications. Any divergence between any IEC Publication and the corresponding national or regional publication shall be clearly indicated in the latter.
- 5) IEC itself does not provide any attestation of conformity. Independent certification bodies provide conformity assessment services and, in some areas, access to IEC marks of conformity. IEC is not responsible for any services carried out by independent certification bodies.
- 6) All users should ensure that they have the latest edition of this publication.
- 7) No liability shall attach to IEC or its directors, employees, servants or agents including individual experts and members of its technical committees and IEC National Committees for any personal injury, property damage or other damage of any nature whatsoever, whether direct or indirect, or for costs (including legal fees) and expenses arising out of the publication, use of, or reliance upon, this IEC Publication or any other IEC Publications.
- 8) Attention is drawn to the Normative references cited in this publication. Use of the referenced publications is indispensable for the correct application of this publication.
- 9) Attention is drawn to the possibility that some of the elements of this IEC Publication may be the subject of patent rights. IEC shall not be held responsible for identifying any or all such patent rights.

International Standard IEC 61377 has been prepared by IEC technical committee 9: Electrical equipment and systems for railways.

This edition cancels and replaces IEC 61377-1 (2006), IEC 61377-2 (2002) and IEC 61377-3 (2002). It constitutes a technical revision.

This edition includes the following main technical changes with regard to the previous editions: it includes updates as necessary in order to meet the current technical state of the art, to improve clarity and to create an edition that considers all types of motors part of a traction system.

The text of this standard is based on the following documents:

FDIS	Report on voting
9/2078/FDIS	9/2113/RVD

Full information on the voting for the approval of this standard can be found in the report on voting indicated in the above table.

This publication has been drafted in accordance with the ISO/IEC Directives, Part 2.

The committee has decided that the contents of this publication will remain unchanged until the stability date indicated on the IEC website under "<http://webstore.iec.ch>" in the data related to the specific publication. At this date, the publication will be

- reconfirmed,
- withdrawn,
- replaced by a revised edition, or
- amended.

## RAILWAY APPLICATIONS – ROLLING STOCK – COMBINED TEST METHOD FOR TRACTION SYSTEMS

### 1 Scope

This International Standard applies to the traction system consisting (when it applies) of traction motor(s), converter(s), traction control equipment including software, transformer, input filters, brake resistors, main circuit-breaker, cooling equipment, transducers, contactors, etc.

Figure 1 is just an overview and is not representative of all traction system architectures.

Current collector, mechanical braking systems and gearbox are not in the scope of this standard.

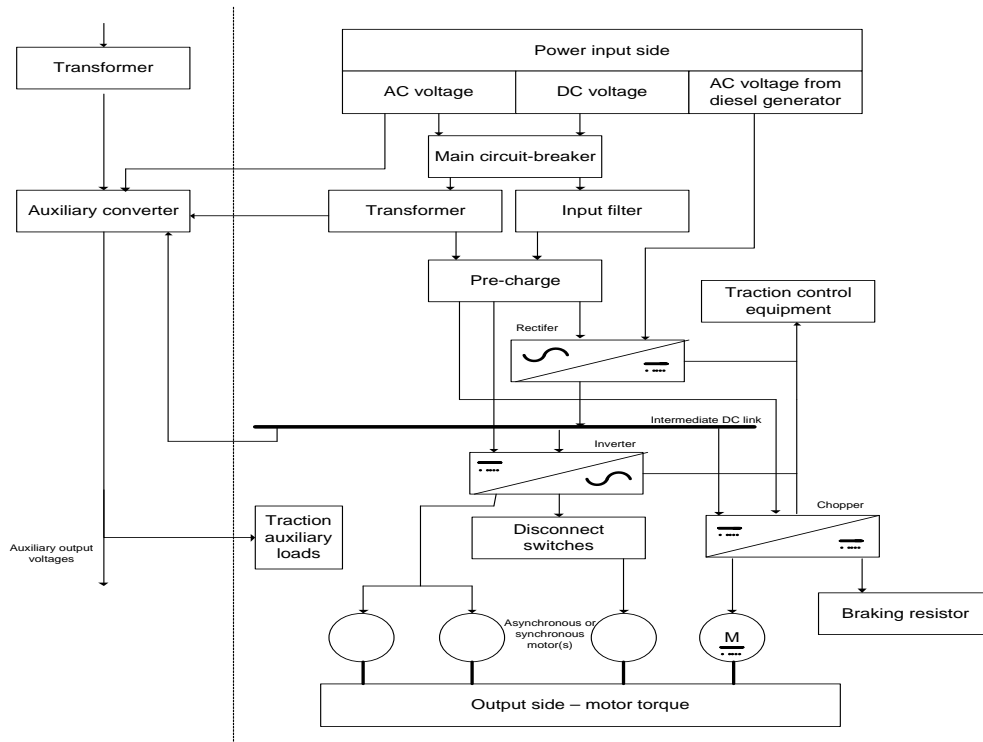
Types of motors applicable in this standard are asynchronous, or synchronous including permanent magnet (PMM), or direct current (DC).

The auxiliary converter(s) is (are) part of the scope when the auxiliary converter is enclosed within the traction converter. Otherwise, when the traction system feeds an auxiliary system outside the traction converter, the auxiliary system can be replaced by an equivalent load.

NOTE 1 Energy storage system is not considered in this standard since there is no specific type test standard for energy storage system.

NOTE 2 Auxiliary loads validation is not part of this standard.

NOTE 3 The gearbox can be part of test set-up, but it is not a part of traction system.



IEC

Figure 1 – Overview of traction system architecture